



HOOSIERS BY THE NUMBERS

Your premier source for labor market information for Indiana.



LABOR MARKET REVIEW



December 2018 Labor Market Review

Reported by: Kathy Jaworski

Regional Workforce Analyst
[Email Kathy](mailto:kjaworski@dwd.in.gov)
kjaworski@dwd.in.gov

Tel: 219-841-6347



LABOR MARKET REVIEW

Economic Growth Region 2

Statistical Data Report for December 2018, Released February 2019

State Employment and Unemployment

Unemployment rates were higher in December in 4 states, lower in 3 states, and stable in 43 states and the District of Columbia, the U.S. Bureau of Labor Statistics reported. Fourteen states had jobless rate decreases from a year earlier and 36 states and the District had little or no change. The national unemployment rate rose by 0.2 percentage point from November to 3.9 percent but was 0.2 point lower than in December 2017.

Iowa had the lowest unemployment rate in December, 2.4 percent. Alaska had the highest jobless rate, 6.3 percent. In total, 16 states had unemployment rates lower than the U.S. figure of 3.9 percent, 8 states and the District of Columbia had higher rates, and 26 states had rates that were not appreciably different from that of the nation.

Nonfarm payroll employment increased in 8 states and was essentially unchanged in 42 states and the District of Columbia. Over the year, 40 states added nonfarm payroll jobs and 10 states and the District were essentially unchanged. The largest job gains occurred in Texas (+38,000), Florida (+22,800), and Georgia (+16,700). In percentage terms, the largest increase occurred in South Carolina (+0.5 percent), followed by Alabama, Colorado, Georgia, and Indiana (+0.4 percent each).



Economic Growth Region (EGR) 2

Elkhart, Fulton,
Kosciusko, Marshall
and St. Joseph
Counties

Unemployment Rates by State (seasonally adjusted): December 2018

U.S. - 3.9%

Illinois - 4.3%

Indiana - 3.6%

Kentucky - 4.4%

Michigan - 4%

Ohio - 4.6%

Source: U.S. Department of Labor, Bureau of Labor Statistics

Unemployment Rank by County (of 92 counties): December 2018

#34 - St. Joseph (3.6%)

#42 - Fulton (3.4%)

#56 - Marshall (3.2%)

#75 - Elkhart (2.8%)

#82 - Kosciusko (2.7%)

Source: Indiana Department of Workforce Development, Research and Development, Local Area Unemployment Statistics

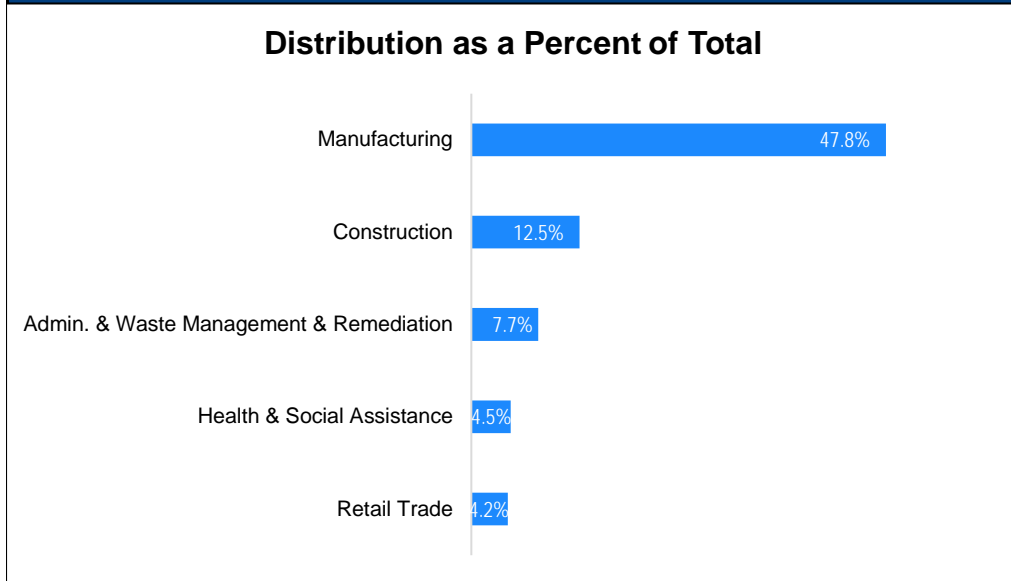
December 2018 Labor Force Estimates (not seasonally adjusted)						
Area	Labor Force	Employed	Unemployed	Dec-18	Nov-18	Dec-17
U.S.	162,510,000	156,481,000	6,029,000	3.7%	3.5%	3.9%
IN	3,372,001	3,257,659	114,342	3.4%	3.6%	3.1%
EGR 2	328,211	317,770	10,441	3.2%	3.3%	2.7%
Elkhart-Goshen MSA	117,369	114,058	3,311	2.8%	3.0%	2.1%
South Bend-Mishawaka MSA	160,759	154,756	6,003	3.7%	3.7%	3.4%
Elkhart Co.	117,369	114,058	3,311	2.8%	3.0%	2.1%
Fulton Co.	9,804	9,467	337	3.4%	3.6%	3.1%
Kosciusko Co.	41,941	40,819	1,122	2.7%	2.9%	2.4%
Marshall Co.	22,932	22,207	725	3.2%	3.4%	2.6%
St Joseph Co.	136,165	131,219	4,946	3.6%	3.7%	3.2%
Elkhart	27,614	26,567	1,047	3.8%	3.9%	2.5%
Goshen	18,202	17,725	477	2.6%	2.9%	2.0%
Mishawaka	25,986	25,147	839	3.2%	3.4%	3.1%
Plymouth	4,283	4,131	152	3.5%	4.0%	3.1%
South Bend	48,276	46,282	1,994	4.1%	4.3%	3.6%
Warsaw	7,575	7,370	205	2.7%	3.1%	2.5%

Source: Indiana Department of Workforce Development, Research & Analysis, Local Area Unemployment Statistics | Unemployment Statistics Released:01/19 | Notes: The data displayed are presented as estimates only. The most recent month's data are always preliminary and are revised when the next month's data are released.

Consumer Price Index (CPI-U Change), Unadjusted Percent Change to December 2018 from				
CPI Item	Dec-17	Nov-18	Dec-17	Nov-18
	U.S. City		Midwest Region*	
All Items	1.9%	-0.3%	1.3%	-0.4%
Food & Beverages	1.6%	0.3%	0.9%	0.2%
Housing	3.0%	0.3%	2.9%	0.4%
Apparel	-0.1%	-3.5%	-0.7%	-3.7%
Transportation	0.7%	-2.6%	-1.0%	-2.6%
Medical Care	2.0%	0.1%	1.6%	0.0%
Recreation	1.2%	0.5%	-0.7%	0.6%
Education & Communication	0.2%	0.0%	-0.4%	-0.1%
Other Goods & Services	2.1%	-0.1%	2.8%	0.2%

*Midwest region = Midwest Urban Average. Midwest Region includes Illinois, Indiana, Iowa, Kansas, Michigan, Minnesota, Missouri, Nebraska, North Dakota, Ohio, South Dakota and Wisconsin | Source: U.S. Bureau of Labor Statistics

Percentage of Unemployment Claims for Top 5 Region 2 Industries December 2018



Source: Indiana Department of Workforce Development, Research and Analysis

WARN Notices

WARN Notices for Region 2 for December 2018				
Company	City	County	# affected	Notice Date

There are no WARN Notices for December 2018 for Region 2.

Source: Indiana Department of Workforce Development, WARN Notices | For information on WARN Act requirements, you may go to the U.S. Department of Labor Employment Training Administration Fact Sheet:

<https://www.doleta.gov/programs/factsht/warn.htm>

Unemployment Claims: December 2018

Region 2

Initial Claims

12/01/18 - 651(D)

12/08/18 - 391

12/15/18 - 393

12/22/18 - 703

12/29/18 - 591

Continued Claims

12/01/18 - 1,367

12/08/18 - 1,473

12/15/18 - 1,721

12/22/18 - 2,181

12/29/18 - 2,109

Total Claims

12/01/18 - 2,018

12/08/18 - 1,864

12/15/18 - 2,114

12/22/18 - 2,884

12/29/18 - 2,700

State of Indiana

Initial Claims

12/01/18 - 3,624

12/08/18 - 3,057

12/15/18 - 3,064

12/22/18 - 4,073

12/29/18 - 3,982

Continued Claims

12/01/18 - 12,609

12/08/18 - 13,411

12/15/18 - 15,061

12/22/18 - 16,804

12/29/18 - 17,297

Total Claims

12/01/18 - 16,233

12/08/18 - 16,468

12/15/18 - 18,125

12/22/18 - 20,877

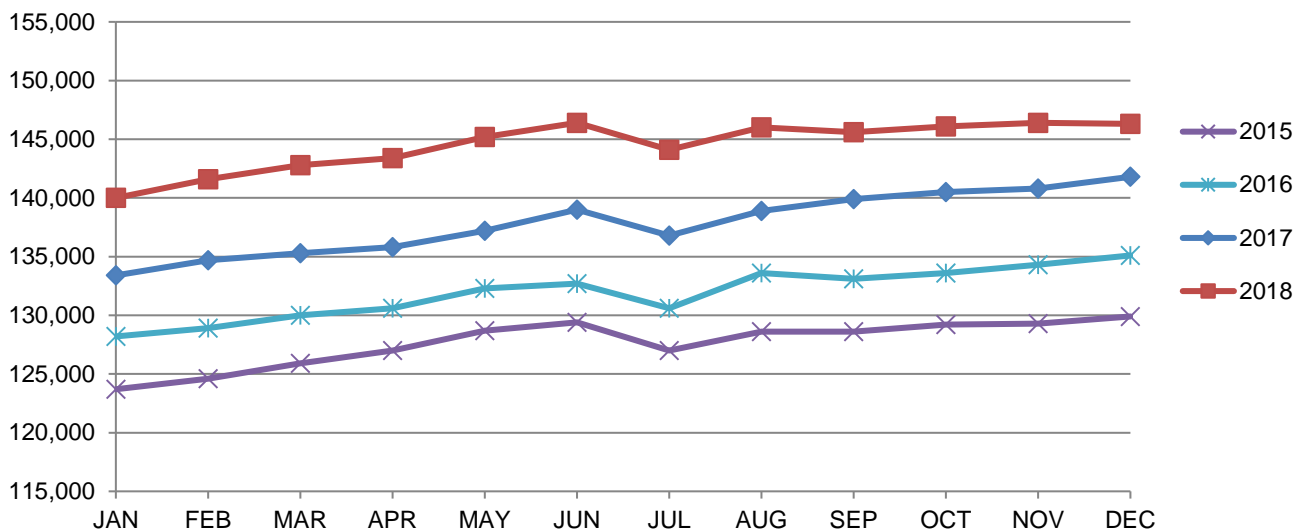
12/29/18 - 21,279

(D) Indicates one or more counties are excluded due to non-disclosure issues | Source: Indiana Department of Workforce Development, Research and Analysis

Elkhart-Goshen MSA							
Wage and Salaried Employment	December 2018			# Change	% Change	# Change	% Change
Industry	Dec-18	Nov-18	Dec-17	Nov-18 to Dec-18		Dec-17 to Dec-18	
Total Nonfarm	146,400	146,300	141,800	100	0.1%	4,600	3.2%
Total Private	137,800	137,700	133,000	100	0.1%	4,800	3.6%
Goods Producing	77,900	77,700	74,400	200	0.3%	3,500	4.7%
Service-Providing	68,500	68,600	67,400	-100	-0.2%	1,100	1.6%
Private Service Providing	59,900	60,000	58,600	-100	-0.2%	1,300	2.2%
Mining, Logging and Construction	3,600	3,800	3,500	-200	-5.3%	100	2.9%
Manufacturing	74,300	73,900	70,900	400	0.5%	3,400	4.8%
Durable Goods	60,400	60,200	59,500	200	0.3%	900	1.5%
Transportation Equipment Manufacturing	39,000	38,700	37,300	300	0.8%	1,700	4.6%
Motor Vehicle Body and Trailer Manufacturing	32,500	32,400	31,700	100	0.3%	800	2.5%
Trade, Transportation, and Utilities	20,700	20,700	20,400	0	0.0%	300	1.5%
Wholesale Trade	7,000	6,900	6,900	100	1.5%	100	1.5%
Retail Trade	10,100	10,200	10,000	-100	-1.0%	100	1.0%
Transportation, Warehousing, and Utilities	3,600	3,600	3,500	0	0.0%	100	2.9%
Information	400	400	400	0	0.0%	0	0.0%
Financial Activities	2,800	2,800	2,800	0	0.0%	0	0.0%
Professional and Business Services	11,000	11,100	10,700	-100	-0.9%	300	2.8%
Education and Health Services	12,300	12,300	12,200	0	0.0%	100	0.8%
Leisure and Hospitality	8,400	8,400	7,900	0	0.0%	500	6.3%
Other Services	4,300	4,300	4,200	0	0.0%	100	2.4%
Government	8,600	8,600	8,800	0	0.0%	-200	-2.3%
Federal Government	300	300	300	0	0.0%	0	0.0%
State Government	200	200	200	0	0.0%	0	0.0%
Local Government	8,100	8,100	8,300	0	0.0%	-200	-2.4%
Local Government Educational Services	5,500	5,600	5,500	-100	-1.8%	0	0.0%

Source: Indiana Dept of Workforce Development, Research and Analysis, Current Employment Statistics

Elkhart-Goshen MSA Employment Trends

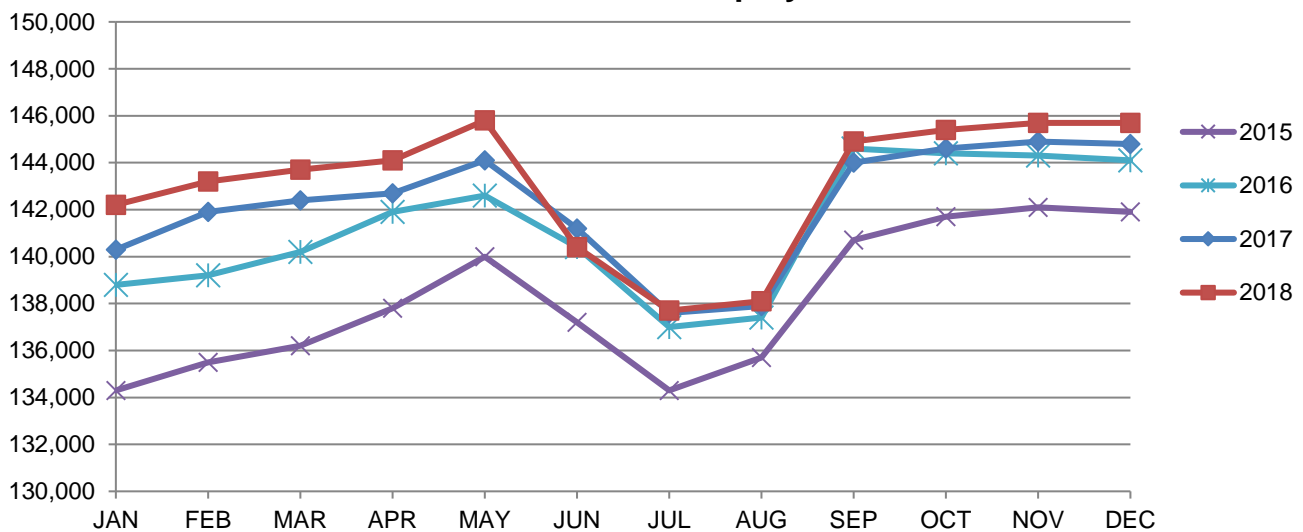


Source: Indiana Department of Workforce Development, Research & Analysis, Current Employment Statistics | Note: Historical data for the most recent 4 years (both seasonally adjusted and not seasonally adjusted) are revised near the beginning of each calendar year, prior to the release of January estimates for statewide data.

South Bend-Mishawaka MSA							
Wage and Salaried Employment	December 2018			# Change	% Change	# Change	% Change
Industry	Dec-18	Nov-18	Dec-17	Nov-18 to Dec-18	Dec-17 to Dec-18	Dec-17 to Dec-18	Dec-17 to Dec-18
Total Nonfarm	145,700	145,700	144,800	0	0.0%	900	0.6%
Total Private	129,400	129,500	128,600	-100	-0.1%	800	0.6%
Goods Producing	24,400	24,200	23,700	200	0.8%	700	3.0%
Service Providing	121,300	121,500	121,100	-200	-0.2%	200	0.2%
Private Service Providing	105,000	105,300	104,900	-300	-0.3%	100	0.1%
Mining, Logging and Construction	5,800	6,000	5,600	-200	-3.3%	200	3.6%
Manufacturing	18,600	18,200	18,100	400	2.2%	500	2.8%
Trade, Transportation and Utilities	25,900	25,900	25,900	0	0.0%	0	0.0%
Wholesale Trade	6,500	6,500	6,400	0	0.0%	100	1.6%
Retail Trade	15,100	15,200	15,400	-100	-0.7%	-300	-2.0%
General Merchandise Stores	3,800	3,900	3,700	-100	-2.6%	100	2.7%
Transportation, Warehousing and Utilities	4,300	4,200	4,100	100	2.4%	200	4.9%
Information	1,400	1,400	1,500	0	0.0%	-100	-6.7%
Financial Activities	6,000	6,000	6,000	0	0.0%	0	0.0%
Professional & Business Services	13,000	13,300	13,600	-300	-2.3%	-600	-4.4%
Educational & Health Services	37,200	37,100	37,700	100	0.3%	-500	-1.3%
Hospitals	6,500	6,400	6,300	100	1.6%	200	3.2%
Leisure & Hospitality	15,300	15,400	14,000	-100	-0.7%	1,300	9.3%
Food Services and Drinking Places	11,600	11,500	11,500	100	0.9%	100	0.9%
Other Services	6,200	6,200	6,200	0	0.0%	0	0.0%
Total Government	16,300	16,200	16,200	100	0.6%	100	0.6%
Federal Government	1,000	1,000	1,000	0	0.0%	0	0.0%
State Government	2,700	2,700	2,700	0	0.0%	0	0.0%
Local Government	12,600	12,500	12,500	100	0.8%	100	0.8%
Local Government Educational Services	7,200	7,200	7,200	0	0.0%	0	0.0%

Source: Indiana Dept of Workforce Development, Research and Analysis, Current Employment Statistics

South Bend-Mishawaka MSA Employment Trends



Source: Indiana Department of Workforce Development, Research & Analysis, Current Employment Statistics | Note: Historical data for the most recent 4 years (both seasonally adjusted and not seasonally adjusted) are revised near the beginning of each calendar year, prior to the release of January estimates for statewide data.

Frequently Listed Jobs	
Top 20 job listings by number of openings in Region 2 in the past month	
Rank	Occupations
1	Ushers, Lobby Attendants, and Ticket Takers
2	Personal Care Aides
3	Production Workers, All Other
4	Registered Nurses
5	Concierges
6	Hotel, Motel, and Resort Desk Clerks
7	Retail Salespersons
8	Customer Service Representatives
9	Packers and Packagers, Hand
10	Laborers and Freight, Stock, and Material Movers, Hand
11	Security Guards
12	Taxi Drivers and Chauffeurs
13	Helpers--Production Workers
14	Home Health Aides
15	Multiple Machine Tool Setters, Operators, and Tenders, Metal and Plastic
16	Auditors
17	Engineers, All Other
18	Maintenance Workers, Machinery
19	Stock Clerks, Sales Floor
20	Heavy and Tractor-Trailer Truck Drivers

Source: Indiana Workforce Development, Indiana Career Connect

Applicant Pool	
Top 20 occupations desired by applicants on their resumes in the past 12 months	
Occupations	# of applicants
Production Workers, All Other	946
Assemblers and Fabricators, All Other	605
Helpers--Production Workers	486
Customer Service Representatives	307
Laborers and Freight, Stock, and Material Movers, Hand	251
Cashiers	231
Office Clerks, General	204
Office and Administrative Support Workers, All Other	187
Stock Clerks and Order Fillers	180
First-Line Supervisors of Production and Operating Workers	162
Welders, Cutters, Solderers, and Brazers	156
Shipping, Receiving, and Traffic Clerks	150
Nursing Assistants	150
Retail Salespersons	148
Receptionists and Information Clerks	146
Team Assemblers	142
Managers, All Other	131
Packers and Packagers, Hand	127
Administrative Services Managers	126
Industrial Truck and Tractor Operators	126

Source: Indiana Workforce Development, Indiana Career Connect

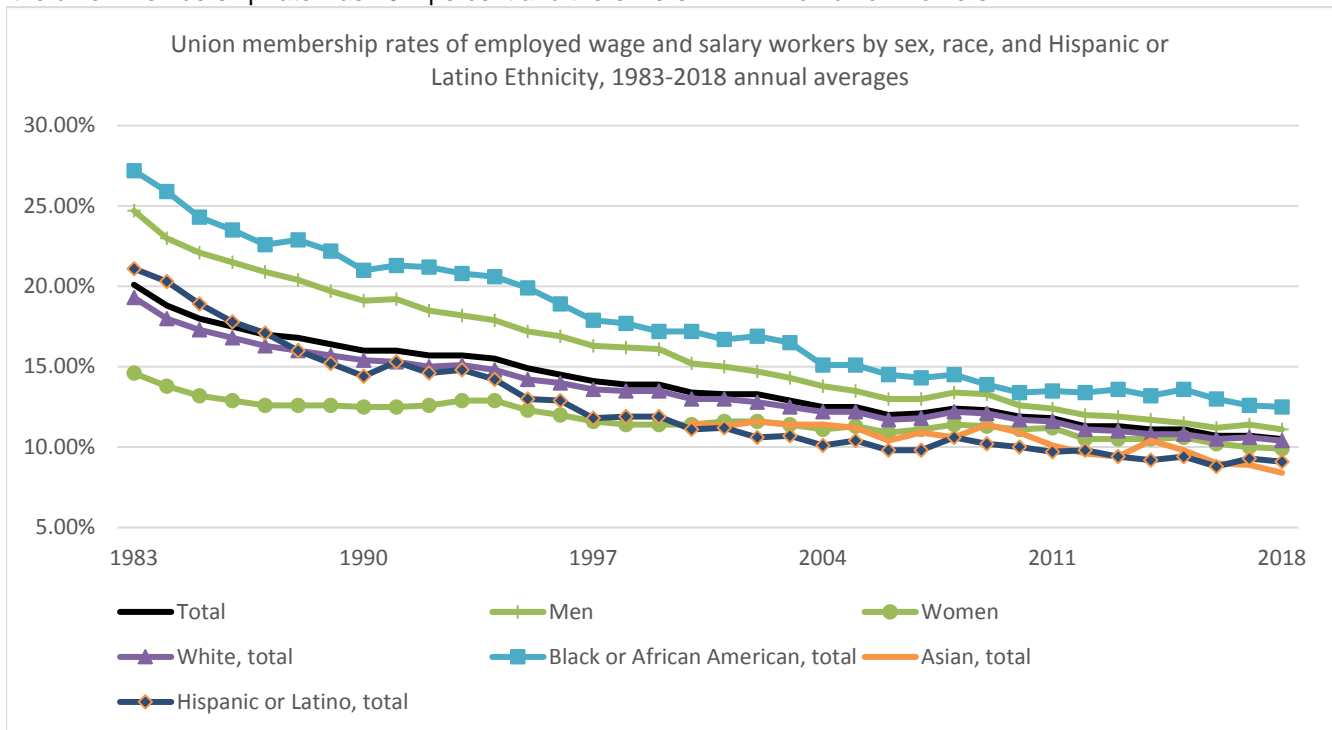
Statewide Average Weekly Hours & Earnings by Industry for December 2018			
Industry	Average Earnings (per hour)	Average # of hours worked (weekly)	Average Earnings (per week)
Construction	\$27.80	40.8	\$1,134.24
Manufacturing	\$21.96	44.3	\$972.83
Durable Goods	\$22.62	45.0	\$1,017.90
Fabricated Metal Product Manufacturing	\$17.02	45.7	\$777.81
Transportation Equipment Manufacturing	\$27.34	50.1	\$1,369.73
Non-Durable Goods	\$20.13	42.4	\$853.51
Retail Trade	\$14.98	30.6	\$458.39
Financial Activities	\$22.99	36.5	\$839.14
Health Care and Social Assistance	\$21.82	33.7	\$735.33
Accommodation and Food Services	\$11.42	23.6	\$269.51
Food Services and Drinking Places	\$11.08	22.5	\$249.30

Source: Indiana Department of Workforce Development, Current Employment Statistics

Union membership rate 10.5 percent in 2018, down from 20.1 percent in 1983

Jan 25 2019

The union membership rate—the percent of wage and salary workers who were members of unions—was 10.5 percent in 2018, down by 0.2 percentage point from 2017. The number of wage and salary workers belonging to unions, 14.7 million in 2018, was about the same as in 2017. In 1983, the first year for which comparable union data are available, the union membership rate was 20.1 percent and there were 17.7 million union workers.



In 2018, the union membership rate continued to be higher for men (11.1 percent) than for women (9.9 percent). The gap between their rates has narrowed considerably since 1983, when the rate for men was 24.7 percent and the rate for women was 14.6 percent.

Black workers continued to have a higher union membership rate in 2018 (12.5 percent) than workers who were White (10.4 percent), Asian (8.4 percent), or Hispanic (9.1 percent).

These data are from the Current Population Survey. To learn more, see "Union Members — 2018." The numbers exclude all self-employed workers. People whose ethnicity is Hispanic or Latino may be of any race.

Bureau of Labor Statistics, U.S. Department of Labor, The Economics Daily, Union membership rate 10.5 percent in 2018, down from 20.1 percent in 1983 on the Internet at <https://www.bls.gov/opub/ted/2019/union-membership-rate-10-point-5-percent-in-2018-down-from-20-point-1-percent-in-1983.htm> (visited January 31, 2019).

County Unemployment Rates December 2018



INDIANA
DEPARTMENT OF
WORKFORCE
DEVELOPMENT

Questions?

Please contact the DWD
Research and Analysis
Regional Labor Analyst
listed below:

Kathy Jaworski
Regional Labor Analyst
Research and Analysis

[Indiana Department of
Workforce Development](http://Indiana Department of Workforce Development)

219-841-6347

kjaworski@dwd.in.gov

